



**BLOSSOM**  
RIDGE



Fieldstone  
Communities<sup>LLC</sup>

[FieldstoneCommunitiesLLC.com](http://FieldstoneCommunitiesLLC.com)

## BLOSSOM RIDGE, ORANGEVALE

Nestled in the heart of Orangevale, Blossom Ridge is a charming new community of 32 single-family homes, offering the perfect blend of space, style, and suburban tranquility. Set on a historic 10-acre former orchard, this exclusive development features expansive lots of 8,500 to 13,907 square feet, giving homeowners the flexibility to create their ideal lifestyle.



With a thoughtfully designed mix of single-story and two-story homes ranging from approximately 2,230 to 3,417 square feet and offering optional ADUs, Blossom Ridge caters to a variety of buyers—from growing families to pre-retirees looking for more space. Featuring two- and three-car garages, contemporary architecture, and no HOA, this community delivers the best of modern convenience in a relaxed, rural setting.



Located just minutes from shopping, dining, parks, and top employment corridors, Blossom Ridge offers the best of Orangevale living—where charm meets convenience. Secure your place in this rare opportunity today!



## ABOUT YOUR BUILDER



Fieldstone Communities is a local home builder. We're focused on building beautiful homes, designing friendly new neighborhoods, and creating the spaces where our homeowners and their families can thrive.

We believe that our thoughtful designs and careful planning will give you a home that adds comfort and enjoyment to your life.



*Building exceptional homes and vibrant communities where families thrive today and for generations to come.*



**Aaron Ross-Swain** Founder, CEO of Fieldstone Communities

BLOSSOM RIDGE

# Plan 2230

FIELDSTONE COMMUNITIES



Elevation A



Elevation B

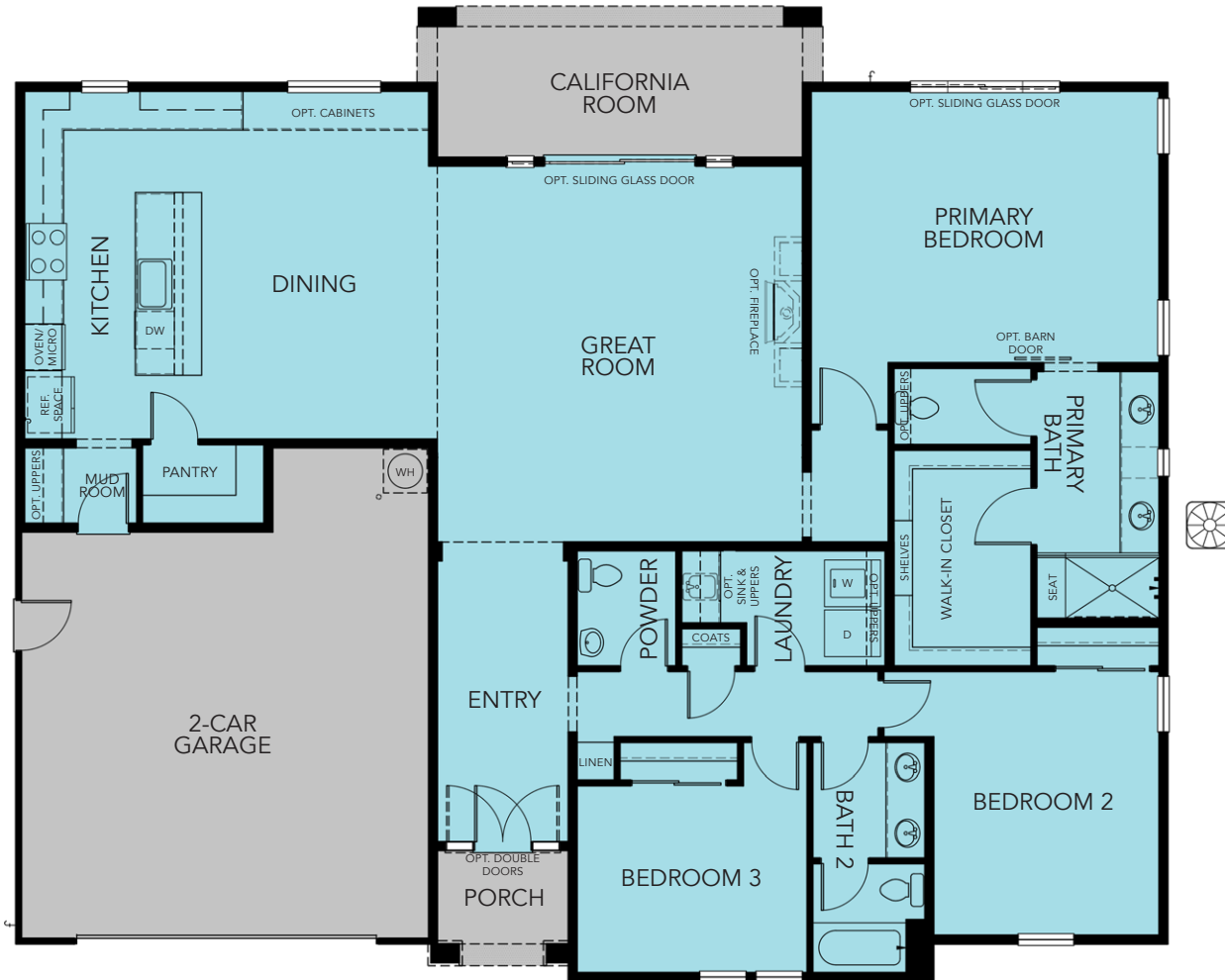


Elevation C

3 Bedrooms | 2.5 Baths | 2,230 Sq Ft | 2-Car Garage  
California Room | Great Room | Dining Room | Mud Room  
Optional Fireplace at Great Room

Floorplans and renderings are artists' conceptions and are subject to change without notice. Please see Sales Agent for details.

# Plan 2230



Single Story

BLOSSOM RIDGE

# Plan 2704

FIELDSTONE COMMUNITIES



Elevation A



Elevation B



Elevation C

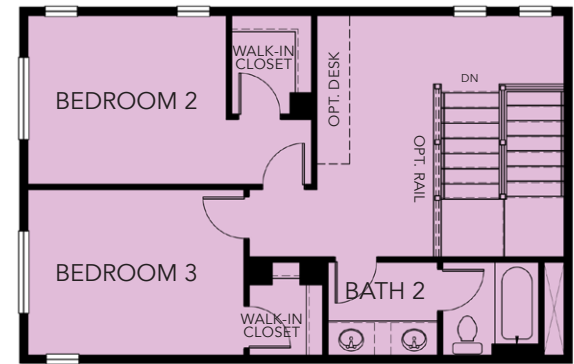
3 Bedrooms | 2.5 Baths | 2,704 Sq Ft | 3-Car Garage  
Pocket Office | California Room | Great Room | Dining Room | Loft | Mud Room  
Primary Suite Downstairs | Optional Fireplace at Great Room

Floorplans and renderings are artists' conceptions and are subject to change without notice. Please see Sales Agent for details.

# Plan 2704



First Floor



Second Floor

## BLOSSOM RIDGE

# Plan 2810

FIELDSTONE COMMUNITIES



Elevation A



Elevation B



Elevation C

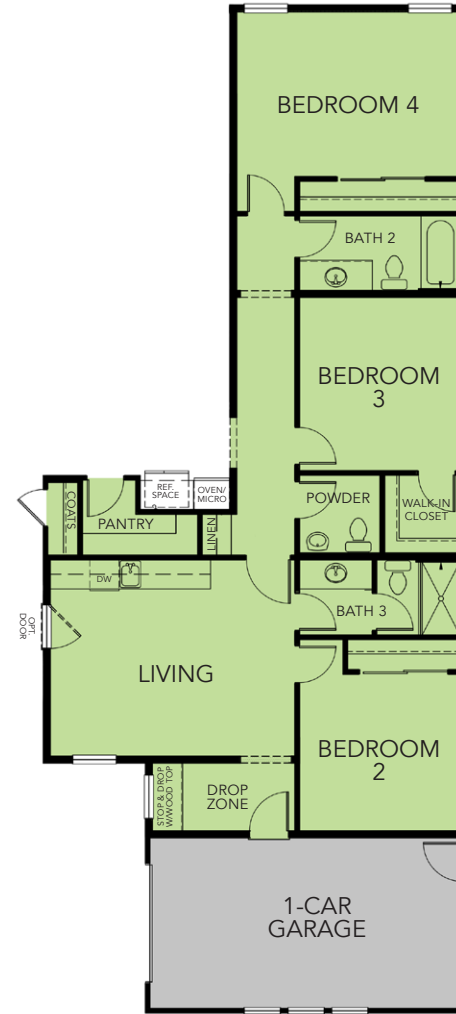
4 Bedrooms | 3.5 Baths | 2,810 Sq Ft | 2-Car Garage + 1-Car Garage  
California Room | Office | Mud Room | Great Room | Dining Room  
Optional Fireplace at Great Room | Optional Formal Dining ILO Office  
Optional Multi-Generational Suite ILO Office

Floorplans and renderings are artists' conceptions and are subject to change without notice. Please see Sales Agent for details.

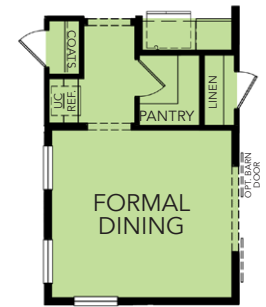
# Plan 2810



Single Story



OPTIONAL  
MULTI-GENERATIONAL SUITE



OPTIONAL  
FORMAL DINING

BLOSSOM RIDGE

# Plan 2984

FIELDSTONE COMMUNITIES



Elevation A



Elevation B



Elevation C

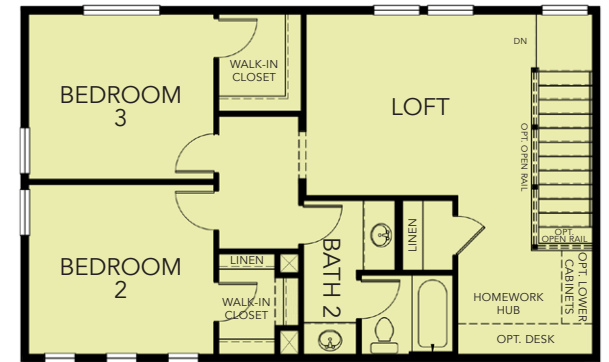
3 Bedrooms | 2.5 Baths | 2,984 Sq Ft | 3-Car Garage  
Great Room | Dining Room | Mud Room | Primary Suite Downstairs  
California Room | Lounge | Loft | Optional Fireplace at Great Room

Floorplans and renderings are artists' conceptions and are subject to change without notice. Please see Sales Agent for details.

# Plan 2984



First Floor



Second Floor

BLOSSOM RIDGE

# Plan 3417

FIELDSTONE COMMUNITIES



Elevation A



Elevation B



Elevation C

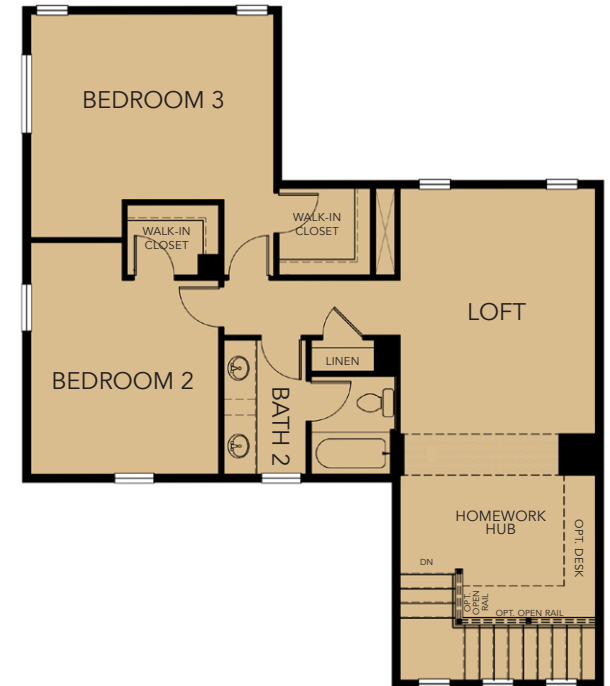
4 Bedrooms | 3.5 Baths | 3,417 Sq Ft | 3-Car Tandem Garage with Workshop  
Great Room | Dining Room | California Room | Primary Suite Downstairs  
Office | Loft | Homework Hub | Optional Fireplace at Great Room

Floorplans and renderings are artists' conceptions and are subject to change without notice. Please see Sales Agent for details.

# Plan 3417



First Floor



Second Floor

# BLOSSOM RIDGE

# ADU

FIELDSTONE COMMUNITIES



Elevation A



Elevation B

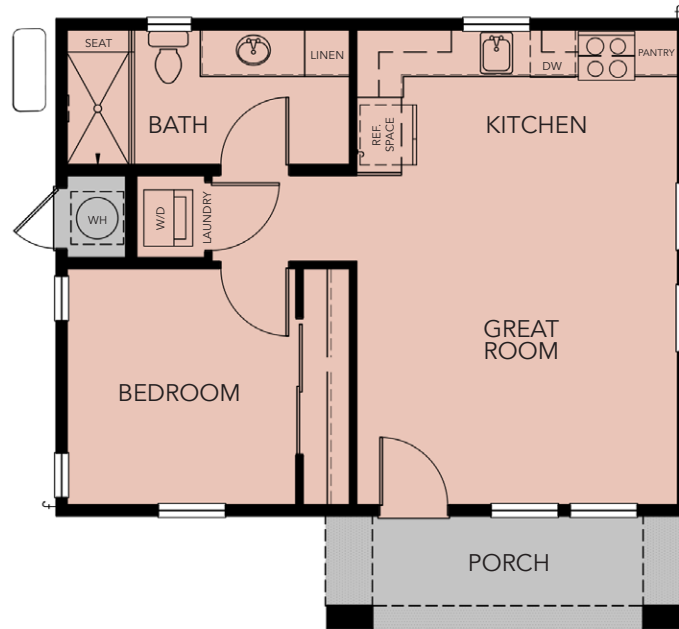


Elevation C

1 Bedroom | 1 Bath | 616 Sq Ft  
Kitchen | Great Room

Floorplans and renderings are artists' conceptions and are subject to change without notice. Please see Sales Agent for details.

# ADU



Single Story

BLOSSOM RIDGE

# Pool House

FIELDSTONE COMMUNITIES



Elevation A



Elevation B

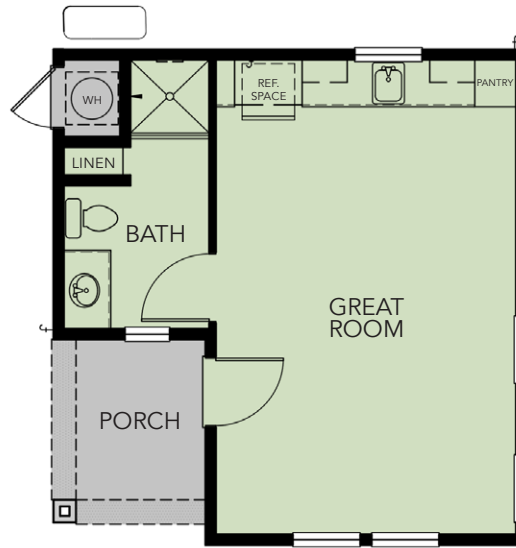


Elevation C

Great Room | Kitchenette | 1 Bath | 400 Sq Ft

Floorplans and renderings are artists' conceptions and are subject to change without notice. Please see Sales Agent for details.

# Pool House



Single Story

# Included Features

## Exterior

- Distinctively-themed architectural elevations
- Generously landscaped front yards complete with water-conserving technologies
- Oversized lots
- Comp shingle roofing
- 8-ft. front entry door with Kwikset matte black hardware with Zwave Tech (panels vary by elevation)
- Architecturally-designed custom exterior color schemes
- Sherwin Williams® exterior paint
- Ring® doorbell

## Interior Finishes

- Sherwin Williams® interior paint
- Overhead lighting in the secondary bedrooms
- Ceiling fan pre-wire at primary bedroom and great room; reinforced junction boxes at secondary bedrooms with the option for ceiling fan pre-wire
- Shaw® carpeting with 5-lb. cushion at bedrooms and living areas
- Mohawk RevWood engineered plank laminate flooring at entry, kitchen, baths and laundry
- 5-1/2" baseboards and 3-1/2" casings
- Pre-plumbing for laundry sink
- Vanity lights in chrome

## Interior

- Stained Shaker Craftsman Cabinetry with soft close hardware & concealed hinges
- 8-ft, single-panel Shaker interior doors
- Kwikset® chrome hardware
- Ply Gem® vinyl dual-pane windows with limited 5/10 warranty (see agent for details)
- Structured wiring in great room and primary bedroom
- USB outlets in select locations (see agent for details)
- Spacious laundry room and pantry
- 12-ft ceiling plate in great room with 9-ft ceiling plate throughout

## Kitchen

- Quartz countertops with full-height backsplash at cooktop and 6" backsplash elsewhere
- Bosch 36" induction cooktop
- Bosch 30" built-in stainless steel oven
- Bosch convection microwave
- Bosch 24" stainless steel dishwasher
- JennAir® appliance package upgrade available
- Moen® sleek modern spot-resistant chrome faucet
- Amerisink® 29" undermount sink with 1/2 HP disposal
- Icemaker pre-plumbing at refrigerator

## Primary Bathroom

- Dual Gerber® rectangular undermount sinks & Moen® faucets
- Gerber® elongated low-flow porcelain toilet
- Fiberglass pan or tiled walk-in shower (per plan)
- Engineered stone shower surround
- 5/8" engineered stone with laminated edges and 4" backsplash
- Soaking tub (per plan)

## Secondary Bathrooms

- Dual Gerber® rectangular undermount sinks & Moen® faucets
- Single Gerber® rectangular undermount sink & Moen® faucet in Powder Room
- Gerber® elongated low-flow porcelain toilets
- Fiberglass surrounds in secondary bathrooms; Engineered stone at bath 3

## Laundry

- Lower cabinets included with the option to add uppers
- Engineered stone countertops with 6" backsplash

## Garage

- Fire-taped interior with overhead LED lighting
- Garage door openers, all doors

## Energy Efficiency

- All electric community
- Mandatory photovoltaic system available as lease or purchase
- Nest thermostat
- High-efficiency 50-gallon heat pump water heater
- High-efficiency heating and cooling
- Zoned comfort control — dual zones for first and second floor (per plan)
- High-efficiency windows with low-E, dual-pane windows
- Insulated air ducts
- Heat pump HVAC

Prices, features, availability, terms and incentives are subject to change without notice.



# BLOSSOM RIDGE

FIELDSTONE COMMUNITIES



9065 Wickstrom Drive  
Orangevale, CA 95662

BlossomRidge@taghomes.com  
(916) 962-6462



Prices, features, terms, incentives, availability, and broker/agent referral programs are subject to change without notice. Completion dates are estimates only, and all square footages are approximate. Please consult a sales representative for the most current information. We are committed to the letter and spirit of U.S. policy for equal housing opportunity. We support an affirmative advertising and marketing program in which there are no barriers to housing based on race, color, national origin, religion, gender, sexual orientation, familial status, or disability. Marketed by The Advantage Group - CA DRE# 01187063

